



Great Enjoyment with Mini System

NetTop- 3 Liter

Specification

Model	MD200
Chipset	▪ G43+ ICH10
FSB	▪ 1333
CPU Support	▪ Intel® Core 2 Duo, and Celeron CPU (up to 65 Watt)
Memory	▪ 2 x SODIMM ▪ DDR2 up to 4GB
Graphics	▪ Built-in Intel® GMA X4500, Full HD Playback ▪ Support DirectX® 10
Storage	▪ Support 1 x 3.5" SATA II HDD, up to 1TB
ODD	▪ Support SATAII Slim DVD Supermulti Slot-in type
Front Panel	▪ 4 x USB ▪ 1 x Headphone output ▪ 1 x MIC-IN ▪ Card reader ▪ 1 x IEEE 1394 Port (SD/SDHC/MMC/MMC Plus/MS/MS Pro/MS Pro-HG)
Rear Panel	▪ 4 x USB ▪ 1 x e-SATA ▪ 1 x D-SUB ▪ 1x HDMI ▪ 1 x SPDIF ▪ LAN RJ45 (10/100/1G LAN) ▪ 8 Channel Audio, 5 Jacks ▪ WiFi antenna (Optional) ▪ AV IN (S-Video) (Optional) ▪ TV IN (TV Tuner) (Optional)
Power	▪ 120W/ 19V Adaptor
OS Support	▪ Windows Vista Premium Ready
Expansion	▪ 1 x mini PCIE for wireless card (802.11a/b/g/n WLAN) ▪ 1 x mini PCIE for TV tuner card
Dimensions (mm)	▪ 270mm * 200mm * 60mm



Integral Performance

- Powerful computing the same as desktop PC
- Smooth multimedia experiences



High Definition Audio & Visual Enjoyment

- Support Microsoft® DirectX® 10
- 8 channel HD Audio



Easy Hardware Installation

- A modularized design enables easy and quick hardware installation, less assembly time
- Easy to deploy and manage
- Quick to set up with your other IT assets



Space Saving

- A minimal hardware space
- 88% smaller than desktop PC (3L v.s.24L)



ECS Green Assurance System

- Reinforce a Green life style
- Choose ECS environmental friendly products

MD200 Overview



- | | | |
|---|--------------------------|---|
| 1 Power Button | 5 HDMI Connector | 9 S-Video Connector |
| 2 4 IN 1 Card Reader | 6 VGA Connector | 10 LAN |
| 3 USB Connector | 7 eSATA Connector | 11 TV-Tuner Connector |
| 4 Microphone Jack / Headphone Jack | 8 USB Connector | 12 Microphone Jack / Headphone Jack / Line In Jack |

Easy Multimedia Application



Equipped with Multi-functional Memory Card Reader



TV Antenna

Integrates DTV Receiver (optional)

High Quality Visual and Audio Impact



DX10

HDMI
HIGH-DEFINITION MULTIMEDIA INTERFACE

HDMI
(High-Definition Multimedia Interface)



HW Blu-ray
Decoding Acceleration

Powerful Computing



Supports Intel 45 nm Core 2 Processors

eSATA



Provides eSATA Port

Easy Hardware Installation

Easy to Set Up!

Easy to Upgrade!

Easy to Service!

1

Installation of Hard Disk Drive



The HDD compartment is shown on the illustration.



Raise the HDD away from its compartment.



Insert the holder into the HDD.



Align back the HDD into its compartment slot.



Push to secure the HDD into the compartment.

2

Installation of Memory



The slot for the RAM module.



Carefully align the RAM into its slot and press down firmly.

3

Installation of CPU



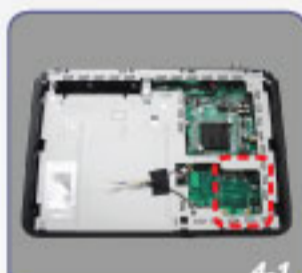
Set CPU into Socket.



Lock Heatsink in MB.

4

Installation of the Wireless Card



The slot for wireless card module.



Connect the cable to the wireless card.



Carefully align the wireless card into its slot and press down firmly.

5

Installation of the TV-Tuner Card



The slot for TV-Tuner card module.



Connect the cable to TV-Tuner card.



Carefully align the TV-Tuner card into its slot and press down firmly.

